

# Capability

BY COMPLETE



DELIVERING UNPARALLELED QUALITY AND CUSTOMER SERVICE, WHILE BUILDING LONG-TERM PARTNERSHIPS WITH OUR CLIENTS, PARTNERS AND EMPLOYEES.

WHO WE ARE

# Complete Capability

Delivering unparalleled quality and customer service, while building long-term partnerships with our clients, partners and employees.

TABLE OF

## Contents

1/5-7 Bermill Street Rockdale NSW 2216 Australia	P. 13 —	<b>Our Story</b> A Little Bit About Us
P. 02 8068 4222 E. info@completeecs.com.au W. www.completeecs.com.au	P. 16 —	<b>Our Services</b> Communication & Electrical
	P. 21 —	<b>Service &amp; Maintenance</b> What We Can Offer You
	P. 25 —	<b>Case Studies</b> Our Clients and Testimonials
	P. 28 —	<b>Meet the Team</b> Organisational Structure
	P. 33 —	<b>Insurances, Policies &amp; Licenses</b> Including Work, Health and Safety
	P. 36 —	<b>Contact</b> Get in Touch - We Love to Chat

# Our Story

*Create, Innovate, Deliver*



Aove  
Crowne Plaza  
Coogee Beach

Complete Electrical & Communication Solutions is a company driven by two individuals who's partnership flourished when they realised they both had the same goals and intentions to develop a company that in-visions the same result as our clients but more so a company that our clients could ultimately trust.

With a combined 25 years' experience within the trade Complete ECS are set to become one of Australia's leading Electrical & Communications contractors.

Complete currently employs 15 full time skilled staff members who carry the same core values as the company.

Complete Electrical & Communication Solutions is a company that places high value on commitment, honesty and integrity in every aspect of the business. At Complete, we strive for perfection and to become well recognized as one of the industry leaders through our service.

Complete works closely with customers to develop solutions that contribute to organisational productivity and performance. We guarantee outstanding levels of attention and care to each and every project whatever the size, whilst maintaining and meeting our clients budgets.

"Our primary goal is to ensure all our clients are satisfied from the beginning"





# Key Services.

## *Create, Innovate, Deliver*

1

### Communication Services

The Complete team are qualified communications technicians with a vast experience in communications, voice & fibre. From an additional data outlet in your work space to a high end structured cabling solution, the complete team are fully capable to carry out all types of work no matter how big or small the job is.

Complete hold certification with some of Australia's biggest vendors such as R&M, Panduit & Clipsal. From design to installation to certification, Complete dedicate themselves to reach a high quality of standards for our valued clients.

A secure and reliable network is crucial to operations. We understand that downtime in networks can cause a lot of disturbance to your business. Complete have been investing heavily in our Communications department to remain at the forefront of innovation. In doing so, we have developed a vast set of skills and have the capacity to carry out a wide variety of communication solutions such as;

- Cat 6, Cat 6A & Cat7 Certified Voice and Data Structured Cabling Solutions
- UTP & FUTP Structured Cabling Solutions
- Add on modifications
- Patch Field Management
- WAN Networks
- Fiber Optic Cabling Solutions
- Design & Implementation
- Telephone Systems InstallationsEnergy Management System

2

### Electrical Services

Complete ECS provide an extensive range of electrical services for clients across Australia. Whether your business requires electrical services and maintenance, or installations and upgrades, we can provide any form of electrical service for your company. We are well equipped to provide comprehensive electrical service and maintenance.

You can contact our friendly customer service team for more information about our services, or take advantage of our 24-hour electrical service for any of your urgent electrical needs. We want to empower our clients, and aim to support businesses regardless of the nature and scale of their requirements.

#### Electrical Services

- Design Management
- Mains cabling Infrastructure
- UPS Systems
- Power Factor Correction
- Thermal Imaging
- Lighting design and installation
- Automated Controls
- CBUS/Dynalite/KNX Lighting Control
- General power
- Energy Management Systems
- Service & Maintenance
- MATV/PAYTV systems
- Security systems
- Fire Systems
- Non-Monitored & Monitored Emergency Lighting Installations



# Service & Maintenance



## Re-Tubing

Full-service re-tubing operation can solve any heat exchanger issue. Sometimes tube testing finds excess pitting, advanced wall loss, or leaks that prohibit re-installation.

Our re-tubing team can quickly return any heat exchanger to service with a full re-tube, partial re-tube, or single tube replacement. We have a large inventory of smooth and finned tubing in a variety of metals, diameters, wall thickness, fin heights and spacing of integral, wound, or plate fins.



## Test & Tagging

We provide testing and tagging services by which electrical equipment is inspected and tested for safety according to set intervals.

Our support team can notify you when your test and tag obligations are due to ensure your business is completely compliant with the current Australian workplace standards.



## Building Upgrades

With a track record of more than a million completed projects across a wide range of sectors such as hospitality, retail, retail centers, restaurants, grocery, banks, and convenience stores, customers trust EMG to manage their projects' schedule, budget, and project quality.

And they tell us that having EMG's dedicated and flexible project management team as an extension of their own is critical to the successful completion of their building upgrade initiatives.



## LED Lighting Upgrades

As one of the most energy efficient lighting options available, the switch to LED lighting could save you money on your utility bill.

Since LED lights are more efficient, you get the same amount of light with roughly a quarter of the energy! You will see lower energy consumption on Day 1 of your switch.



## RCD Testing

RCDs can only provide ongoing protection if they are operational. We provide RCD testing, repair, replacement and upgrade services.

We can supply and install your safety switch and make sure your workplace is protected against electric shock.



## Thermal Imaging

If you are experiencing water problems in your home or building, the main concern is to find out where it's coming from, and stop it. We understand this, and we have the tool to help. Thermal Imaging.

There is nothing like thermal imaging to find the cause of your problem. This amazing tool can detect changes in temperature by less than .05 of a degree. We can see why a certain wall may be a little bit colder than the one next to it. We can help find your water problem and normally, without any damage to the drywall or structure.



## Quarterly Maintenance Checks

Feel free to use this checklist yourself. Most clients have me do this review remotely, but we sometimes go onsite for it. If you are keeping things up to date, then the review is very quick.

If you are not keeping things up to date then it'll take longer to do everything. If you are confident you can handle this yourself, then there is no need for me to check up on you, or perhaps you'd like us to check only once a year. Its up to you.

OUR CLIENTS

---

# Case Studies.

---

A small snapshot of some of the clients we've partnered with to bring a true quality delivery.

---

COMPLETE CAPABILITY





CASE STUDY

# Barry's Bootcamp



## Description

Complete were awarded the Barrys Bootcamp Roll out on a D&C basis and worked closely together with the client to achieve the exact same result they envisioned. The roll out embarked 3 separate studios located across the Sydney CBD. The Barry's Roll Out included new tenancy switchboards with upgraded submains & metering facilities, C-Bus lighting control system integrated with DALI Dimming, Panduit Cat-6A Structured Cabling & a HIK Vision CCTV System.

## Snapshot

Floor Space: 500 SQM  
Duration: 12 WEEKS  
Client: SCHIAVELLO

COMPLETE CAPABILITY





# Barry's Bootcamp



## Description

Complete were awarded the Barrys Bootcamp Roll out on a D&C basis and worked closely together with the client to achieve the exact same result they envisioned. The roll out embarked 3 separate studios located across the Sydney CBD. The Barry's Roll Out included new tenancy switchboards with upgraded submains & metering facilities, C-Bus lighting control system integrated with DALI Dimming, Panduit Cat-6A Structured Cabling & a HIK Vision CCTV System.

## Snapshot

Floor Space: 500 SQM  
Duration: 12 WEEKS  
Client: SCHIAVELLO

# Barry's Bootcamp



## Description

Complete were awarded the Barrys Bootcamp Roll out on a D&C basis and worked closely together with the client to achieve the exact same result they envisioned. The roll out embarked 3 separate studios located across the Sydney CBD. The Barry's Roll Out included new tenancy switchboards with upgraded submains & metering facilities, C-Bus lighting control system integrated with DALI Dimming, Panduit Cat-6A Structured Cabling & a HIK Vision CCTV System.

## Snapshot

Floor Space: 500 SQM  
Duration: 12 WEEKS  
Client: SCHIAVELLO



CASE STUDY

# Barry's Bootcamp



COMPLETE CAPABILITY



# 151 Macquarie Street



## Description

Complete were awarded the Electrical & Communications package for the 151 Macquarie Street Lobby & EOT Facilities upgrade. Complete faced numerous challenges through-out the construction of this project due to the aesthetics of the refurbishment. With live office environments during the day & residential dwellings next door meant that all noisy workings were restricted to weekends. Completes scope of works involved the installation of new Lighting, Power, Cat-6A Panduit Structured Cabling & Dynalite Lighting Control System integrated with DALI Dimming.

COMPLETE CAPABILITY

## Snapshot

Floor Space: 1,000 SQM  
Duration: 36 WEEKS  
Client: SCHIAVELLO

# Golden Century



## Description

Complete were awarded the Electrical & Communications package to the new Level 3 at the renowned Golden Century Restaurant located in Sydney's CBD. Completes scope involved the design & installation of a new MSB, upgraded submains cabling, new distribution boards, lighting control system, Cat-6 Panduit Structured Cabling System, HIK-Vision CCTV System all whilst maintaining 0 down time to a live restaurant below for the whole duration of the project.

## Snapshot

Floor Space: 1,500 SQM  
Duration: 52 WEEKS  
Client: SCHIAVELLO



# Crowne Plaza Coogee Beach



## Description

Complete were awarded the Electrical & Communications package to the refurbished Crowne Plaza Hotel located in the heart of Coogee. Complete upgraded the Electrical & Communications services to 219 guestrooms across all 7 levels including lift lobby's & common hallways.

## Snapshot

Floor Space: 9,800 SQM  
Duration: 26 WEEKS  
Client: SCHIAVELLO

# Microsoft



## Description

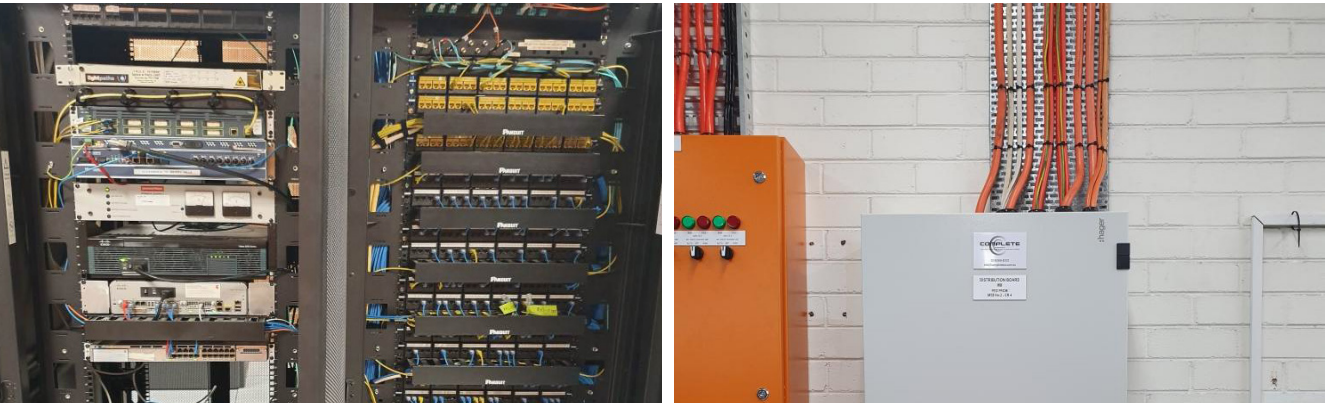
Complete are the preferred Electrical & Communications contractor to the Microsoft Office Building located in North Ryde. Complete carry out all works, Electrical & Comms from service to projects within the Microsoft Building.

## Snapshot

Floor Space: 8,025 SQM  
Duration: CONTINUOUS  
Client: BGIS



# Australia Post Alexandria



## Description

Complete were awarded the Electrical & Communications package for the redevelopment project out at the Australia Post site in Alexandria. The project consists of Distribution board upgrades, new submains cabling, 415v power outlets, Exit and Emergency lighting alterations, Panduit Cat6 structured cabling, MM OM4 Fibre cabling and an extensive relocation of 2x existing 42RU server racks to a new position which was done in one day to ensure Australia Post had the operations back up and running.

## Snapshot

Floor Space: 14,000 SQM  
Duration: 20 WEEKS  
Client: RORK PROJECTS





CASE STUDY

# Tilley & Wills Projects



COMPLETE CAPABILITY



# Greenwood Hotel



## Description

Complete were engaged by clients Tilley & Wills Hotels for all Electrical & Communications works, service & projects across all there venues.

## Snapshot

Floor Space: 790 SQM  
Duration: CONTINUOUS  
Client: TILLEY & WILLS

# Verandah Bar



## Description

Complete were engaged by clients Tilley & Wills Hotels for all Electrical & Communications works, service & projects across all there venues.

## Snapshot

Floor Space: 620 SQM  
Duration: CONTINUOUS  
Client: TILLEY & WILLS



CASE STUDY

# Clovelly Hotel



## Description

Complete were engaged by clients Tilley & Wills Hotels for all Electrical & Communications works, service & projects across all there venues.

## Snapshot

Floor Space: 940 SQM  
Duration: CONTINUOUS  
Client: TILLEY & WILLS

COMPLETE CAPABILITY

CASE STUDY

# The Buena



## Description

Complete were engaged by clients Tilley & Wills Hotels for all Electrical & Communications works, service & projects across all there venues.

## Snapshot

Floor Space: 770 SQM  
Duration: CONTINUOUS  
Client: TILLEY & WILLS



# Meet the Team

---



## **Daniel Talevski**

Daniel started off his apprenticeship in 2004 and jumped into the office 2 years later due to an unfortunate injury. Daniel started to learn the management side of the trade immediately with estimating, contracts administration, project management and design & construct.

His drive and passion has led him to building his own clientele through the years which he continues to service to this day. Daniel's main role in the company is to ensure that operations run to perfection. His honesty, professionalism and hard work continues to be valued by loyal clients.



0401 206 604



[Daniel@completeecs.com.au](mailto:Daniel@completeecs.com.au)



## **Nicholas Dimakos**

Nicholas started off his apprenticeship at 16 years of age in 2011 at a medium size company where he developed a wide range of skills within the Electrical trade. Nicholas went through the ranks and started running commercial projects within his 4th year of his apprenticeship which he quotes "being thrown in the deep end".

Nicholas then went on and worked for two more medium/ large size Electrical companies where he adopted new traits and an abundance of knowledge. Nicholas day to day roll in the company is to ensure all projects are met at a high standard & to build a company based on trust & integrity.

Nicholas believes "being thrown in the deep end" at a young age has brought him to where he is now.



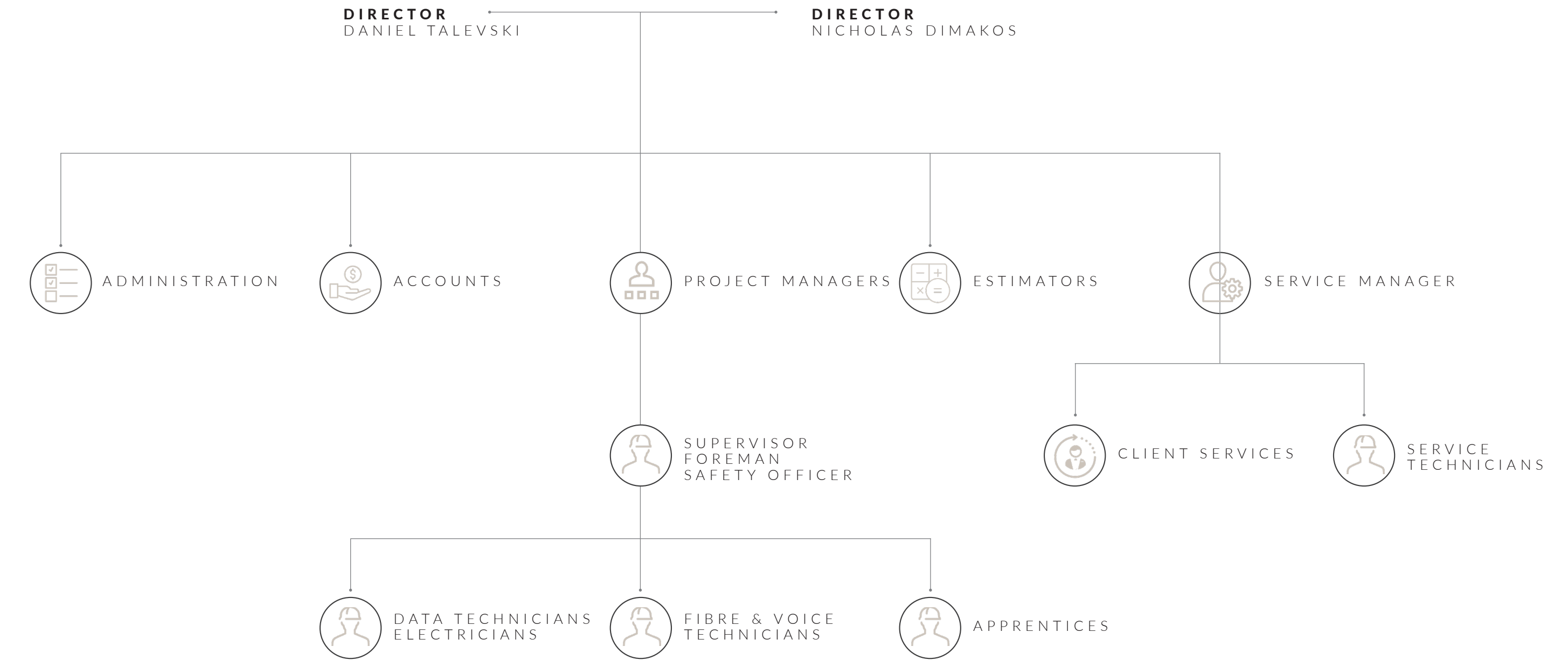
0413 583 941



[Nick@completeecs.com.au](mailto:Nick@completeecs.com.au)



# Organisational Structure





# Insurances, Policies, Licenses & Accreditations

Bringing a true quality, safety and environmental approach.



## Insurances

Public Liability: 20M  
Professional Indemnity: 1M  
Workers Compensation: As per work cover

Certificates to be provided upon request..



## WHS Policy

Our Work Health & Safety Policy is founded on our belief that the wellbeing of people employed including, subcontractors and those visiting our workplaces, is a major priority. People are our most important asset and their health and safety is our greatest responsibility. Visitors and members of the public shall be given equal priority to that of our workforce



## Licenses & Accreditations

- Electrical Contractors License
- ACRS Licence
- Panduit Certified Installer
- R&M Certified Installer
- Clipsal Certified Installer



## The Core of our WHS Policy is:

- To make health and safety a key part of every employee decision.
- To ensure health and safety considering all planning and work process.
- To consult with our workers on a regular basis on safety issues.
- To provide ongoing training and education to ensure that our employees work in the safest possible manner.
- To identify, assess, eliminate or control all potential hazards in the workplace through regular risk assessment and site safety inspections.
- To take a proactive approach to trying to identify potential accidents/incidents before they happen.
- To provide effective injury management and rehabilitation for all employees.

The success of our health and safety management is dependent on our commitment to:

- Implementing this policy
- The pro-active identification of hazards for all work activities via a project Risk Assessment and the adoption of Safe Work Method Statements to control risks that cannot be eliminated



THANK YOU

---

# Stay in touch.

---

## LET'S CONNECT

1/5-7 Bermill Street  
Rockdale NSW 2216  
Australia

P. 02 8068 4222  
E. [Info@completeecs.com.au](mailto:Info@completeecs.com.au)  
W. [www.completeecs.com.au](http://www.completeecs.com.au)



@Completeecs



@Complete\_ecs



@Complete Electrical &  
Communication Solutions